

# USER MANUAL OF SMART KIT



## IMPORTANT NOTE:

Read the manual carefully before connecting your Smart kit(Wireless module). Make sure to save this manual for future reference. Illustrations in this manual are for explanatory purposes. The actual shape shall prevail.



# **CONTENTS**

|  |           |
|--|-----------|
| <b>① SPECIFICATION.....</b>            | <b>1</b>  |
| <b>② DOWNLOAD AND INSTALL APP.....</b> | <b>1</b>  |
| <b>③ PREPARATION .....</b>             | <b>1</b>  |
| <b>④ CREATE ACCOUNT....</b>            | <b>2</b>  |
| <b>⑤ NETWORK CONFIGURATION.....</b>    | <b>2</b>  |
| <b>⑥ HOW TO USE APP.....</b>           | <b>7</b>  |
| <b>⑦ SPECIAL FUNCTIONS.....</b>        | <b>8</b>  |
| <b>⑧ APP DECLARATION.....</b>          | <b>11</b> |

## **1 SPECIFICATION**

Unit model:MC07VX,MC09VX,MC12VX,MC18VX,MC21VX  
Wireless Module Model: EU-SK105, US-SK105  
Antenna Type: Printed PCB Antenna  
Frequency Band: 2400-2483.5MHz  
Operation Temperature:0°C~45°C/32°F~113°F  
Operation Humidity: 10%~85%  
Power Input: DC 5V/300mA  
Maximum TX Power: <20dBm

### **NOTE:**

Company will not be liable for any issues and problems caused by Internet, Wireless Router and Smart Devices. Please contact the original provider to get further help.

## **2 DOWNLOAD AND INSTALL APP**

**CAUTION:** The following QR code is only available for downloading APP. It is totally different with the QR code packed with unit.



**Android**



**iOS**

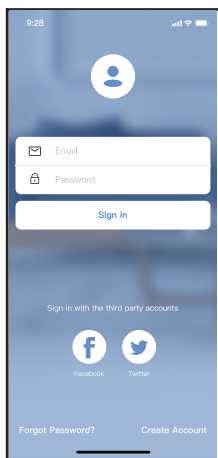
- Android Phone users: scan Android QR code or go to google play, search 'Nethome Plus' App and download it.
- iOS users: scan iOS QR code or go to APP Store, search 'Nethome Plus' app and download it.

## **3 PREPARATION**

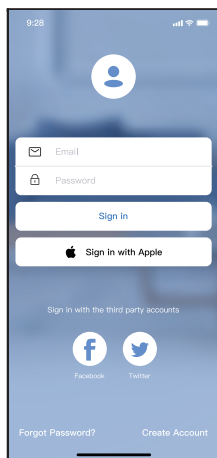
- Please ensure your mobile device is connected to Wireless router. Also, the Wireless router has already connected to Internet before doing user registration and network configuration.
- Make sure your mobile device has already been connected to the Wireless network which you want to use. Also, you need to forget other irrelevant Wireless network in case it influences your configuration process.

## 4 CREATE ACCOUNT

**Reminder:** When you register to use app, you need read and agree the Data Privacy Notice.

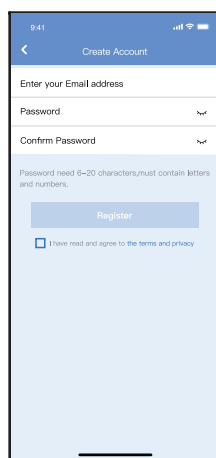


Android



iOS

① Click “Create Account”



② Enter your email address and password, and then click “Register”

## 5 NETWORK CONFIGURATION

### Cautions

- It is necessary to forget any other around network and make sure the Android or iOS device just connect to the Wireless network you want to configure.
- Make sure the Android or iOS device Wireless function works well and can be connected back to your original Wireless network automatically.

### Kindly reminder:

User must finish all the steps in 8 minutes after powering on AC, otherwise you need to power on it again.

### ■ Using Android or iOS device to do network configuration

Make sure your mobile device has already been connected to the Wireless network which you want to use. Also, you need to forget other irrelevant Wireless network in case it influences your configuration process. Disconnect the power supply of AC.

Connect the power supply of AC, activate the AP mode (The pictures in the manual are for explanation purpose only. Your machine may be slightly different. Read the WIRELESS MODE IN USER'S MANUAL or INSTRUCTION MANUAL for detailed operations.).

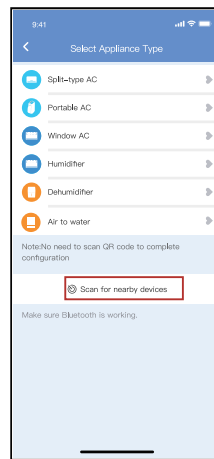
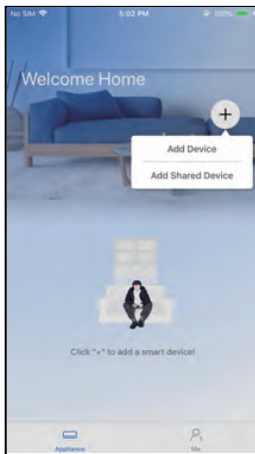
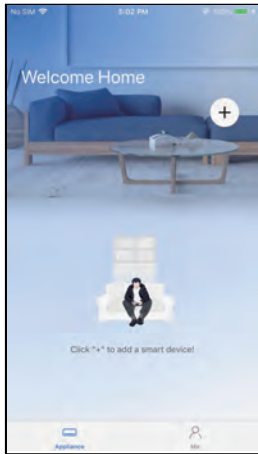
When AP appears in the display, It means that the AC WIRELESS has already entered into AP Mode. User can do the next step configuration.

**Note:** There are two ways to finish the network configuration:

- Network configuration by Bluetooth scan
- Network configuration by select appliance type

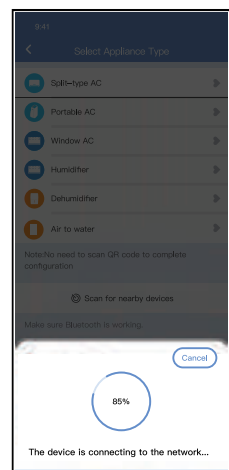
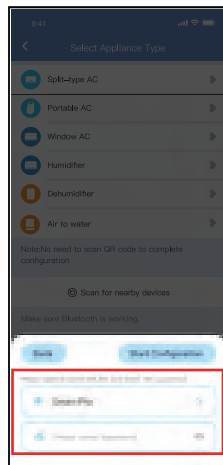
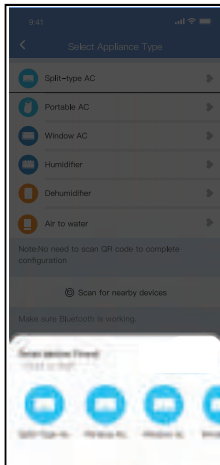
## Network configuration by Bluetooth scan

Note: Make sure the bluetooth of your mobile device is working.



① Press “+ Add Device”

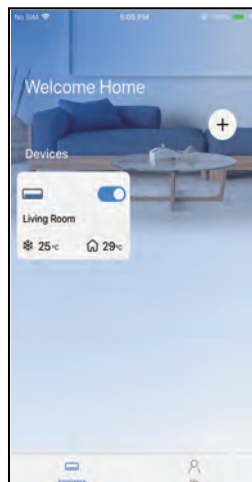
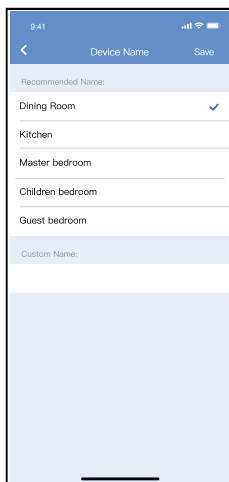
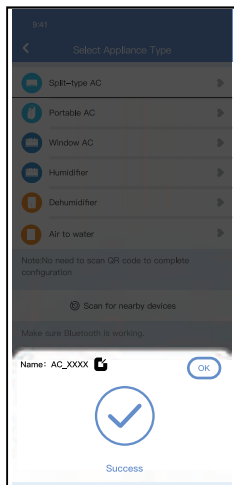
② Press “Scan for nearby devices”



③ Wait smart devices to find, then click to add it

④ Select home wireless network, enter the password

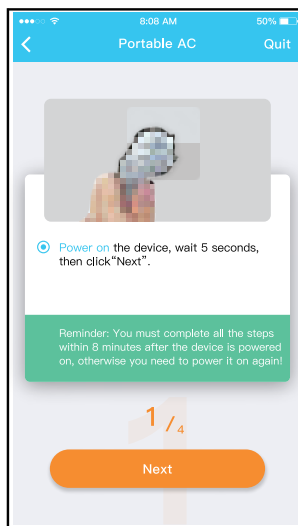
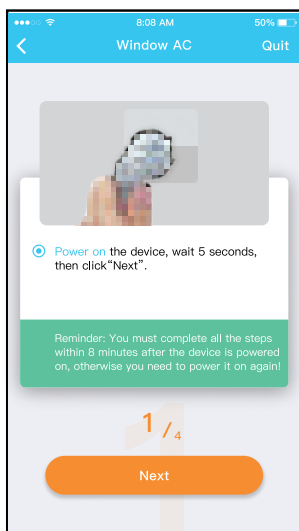
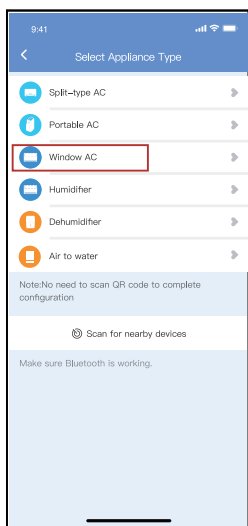
⑤ Wait connecting to the network



⑥ Configuration Success, you can see the device on the list, you can modify the default name.

⑦ Bluetooth network configuration is successful, now you can see the device in the list.

## Network configuration by select appliance type :

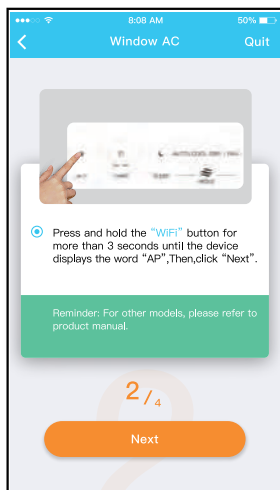


① If the bluetooth network configuration is failure, please select the appliance type.

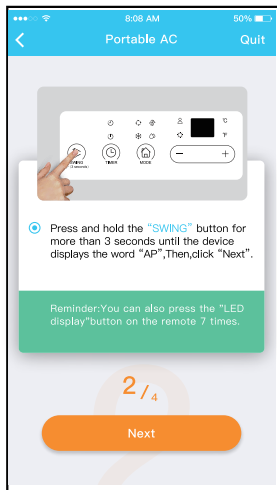
For Window AC

For Portable AC

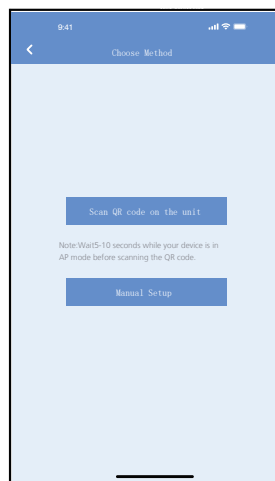
② Please follow the steps to enter "AP" mode.



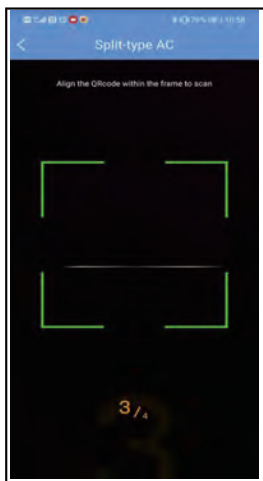
For Window AC



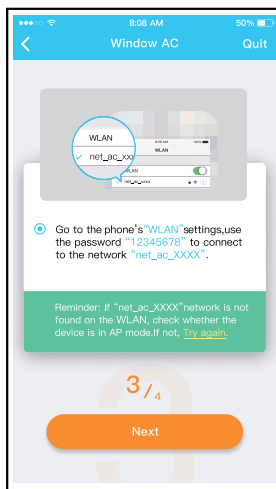
For Portable AC



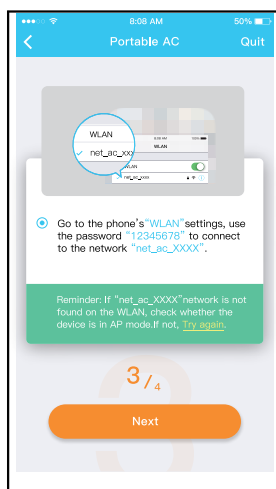
③ Choose the network configuration method.



④ Choose the "Scan the QR code" method.



For Window AC

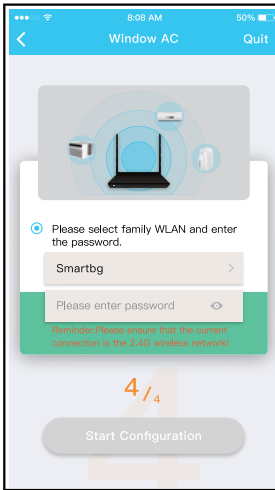


For Portable AC

⑤ When choose the "Manual Setup" method(Android). Connect to the wireless network(iOS).

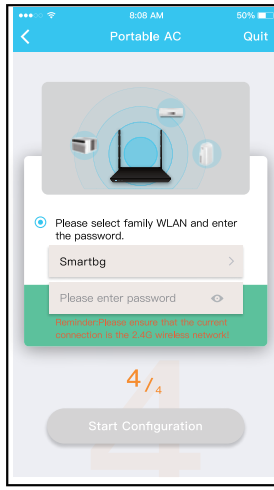
**NOTE:** Steps ③ and ④ are applicable to Android system only. iOS system does not need these two steps.



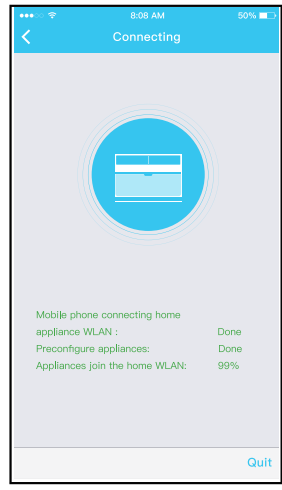


For Window AC

⑥ Please enter password

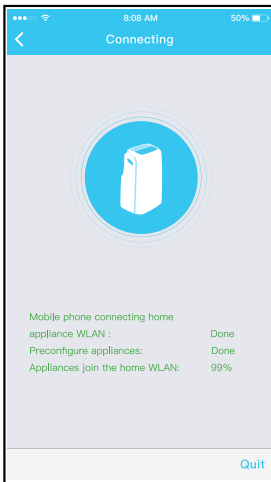


For Portable AC

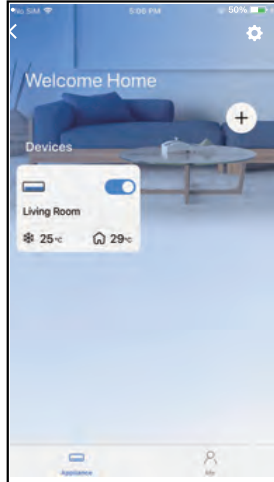


For Window AC

⑦ Network configuration is successful.



For Portable AC



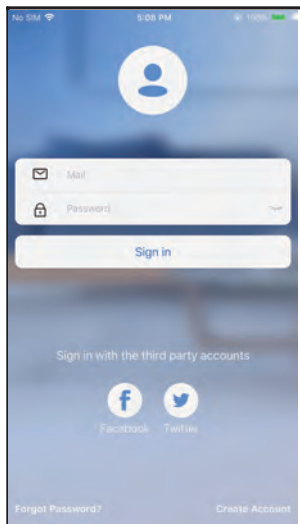
⑧ Configuration Success, you can see the device in the list.

#### NOTE:

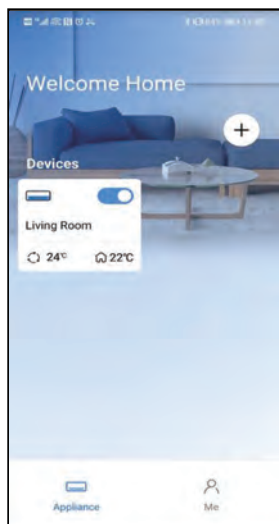
- When finishing network configuration, APP will display success cue words on the screen. Due to different internet environment, it is possible that the device status still display "offline".
- If this situation occurs, it is necessary to pull and refresh the device list on the APP and make sure the device status become "online". Alternatively, user can turn off the AC power and turn on it again, the device status will become "online" after few minutes.

## 6 HOW TO USE APP

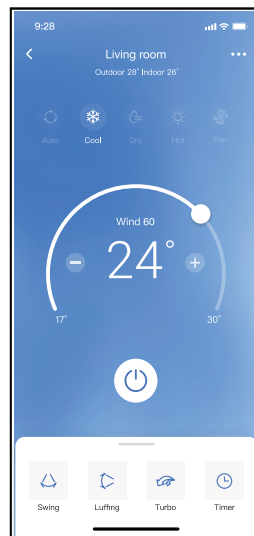
Please ensure both your mobile device and air conditioner are connected to the Internet before using app to control the air conditioner via internet, please follow the next steps:



① Click "Sign in"



② Choose the air conditioner.



③ Thus, user can control air conditioners on/off status, operation mode, temperature, fan speed and so on.

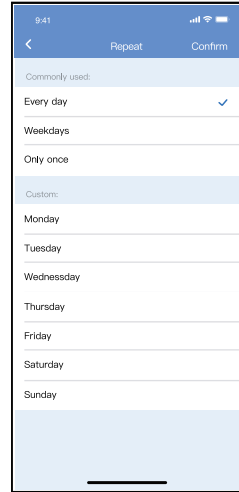
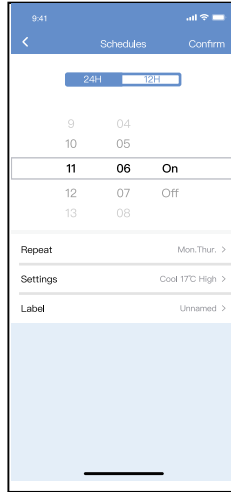
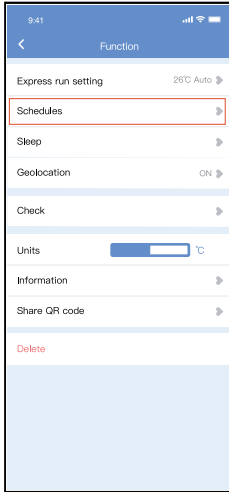
### NOTE:

Not all the function of the APP is available on air conditioner. For example: ECO, Turbo, Swing function, please check the user manual to find more information.

## 7 SPECIAL FUNCTIONS

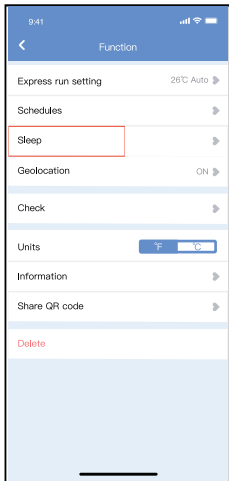
### ■ Schedule

Weekly, user can make an appointment to turn on or off AC on specific time. User also can choose circulation to keep the AC under schedule control every week.



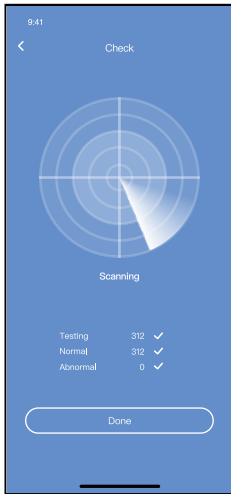
### ■ Sleep

User can customize their own comfortable sleep by setting target temperature.



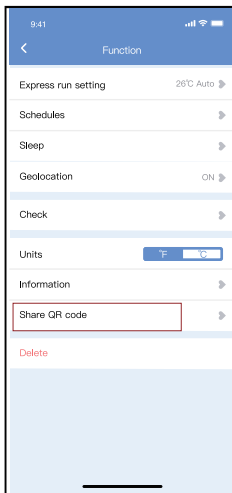
## ■ Check

User can simply check the AC running status with this function. When finishing this procedure, it can display the normal items, abnormal items, and detail information.



## ■ Share Device

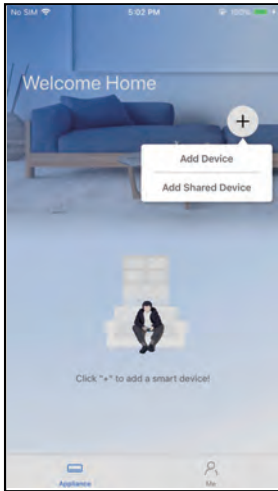
The air conditioner can be controlled by multi-users at the same time by Share Device function.



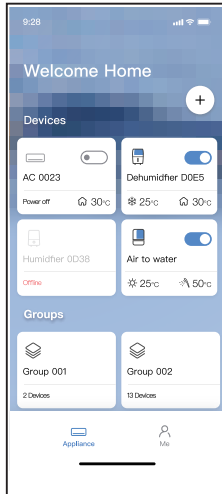
① Click “ Share QR code ”



② QR code display.



- ③ The other users must log in “Nethome Plus” app first, then click “Add Share Device” on their own mobile, then ask them to scan the QR code.



- ④ Now the others can add the shared device.

## **8 APP DECLARATION**

- **Applicable system:IOS,Android.**

- ① APP can not support the latest software version of Android and IOS system.
- ② Due to special situation may be occurred,we explicitly claims below:Not all of the Android and IOS system are compatible with APP.We will not be responsible for any issue as a result of the incompatibility.

- **Wireless safety strategy**

Smart kit only support WPA-PSK/WPA2-PSK encryption and none encryption.  
WPA-PSK/WPA2-PSK encryption is recommended.

- **Cautions**

- ① Due to different network situation,control process may return time-out sometimes. If this situation occurs,the display between board and App may not be the same,please do not feel confused.
- ② Smart Phone camera needs to be 5 million pixels or above to make sure scan QR code well.
- ③ Due to different network situation,sometimes,request time-out could happen,thus,it is necessary to do network configuration again.
- ④ The APP system is subject to update without prior notice for product function improvement. The actual network configuration process may be slightly different from the manual, the actual process shall prevail.
- ⑤ Please Check The Service Website For More Information.

Hereby, we declare that this AC is in compliance with the essential requirements and other relevant provisions of RE Directive 2014/53/EU. A copy of the full DoC is attached.

**NOTE:**

All the illustrations in the manual are for explanation purpose only. Your unit may be slightly different. The actual shape shall prevail.

- **Declaration of conformity**

**CONTAINS FCC ID: 2ADQOMDNA21**

**CONTAINS IC : 12575A-MDNA21**

This device complies with Part 15 of the FCC Rules and it contains licence-exempt transmitter(s)/receiver(s) that comply with Innovation, Science and Economic Development Canada's licence-exempt RSS(s).

Operation is subject to the following two conditions:

- (1) This device may not cause interference;and
- (2) This device must accept any interference,including interference that may cause undesired operation of the device.

Only operate the device in accordance with the instructions supplied. Changes or modifications to this unit not expressly approved by the party responsible for compliance could void the user's authority to operate the equipment. This device complies with FCC radiation exposure limits set forth for an uncontrolled environment. In order to avoid the possibility of exceeding the FCC radio frequency exposure limits, human proximity to the antenna shall not be less than 20cm (8 inches) during normal operation.

NOTE: This equipment has been tested and found to comply with the limits for a Class B digital device, pursuant to part 15 of the FCC Rules. These limits are designed to provide reasonable protection against harmful interference in a residential installation. This equipment generates, uses and can radiate radio frequency energy and, if not installed and used in accordance with the instructions, may cause harmful interference to radio communications. However, there is no guarantee that interference will not occur in a particular installation. If this equipment does cause harmful interference to radio or television reception, which can be determined by turning the equipment off and on, the user is encouraged to try to correct the interference by one or more of the following measures:

- Reorient or relocate the receiving antenna.
- Increase the separation between the equipment and receiver.
- Connect the equipment into an outlet on a circuit different from that to which the receiver is connected.
- Consult the dealer or an experienced radio/TV technician for help.

**Company will not be liable for any issues and problems caused by Internet, Wireless Router and Smart Devices. Please contact the original provider to get further help.**

**Manufacturer:**

GD Midea Air-Conditioning Equipment Co.,Ltd.  
Lingang Road Beijiao Shunde Foshan  
Guangdong People's Republic of China 528311

CP004IU-AP(OEM)  
16122000A81075